

Vortex-integrated Bio-Editors to Catalyze Personalized Treatment

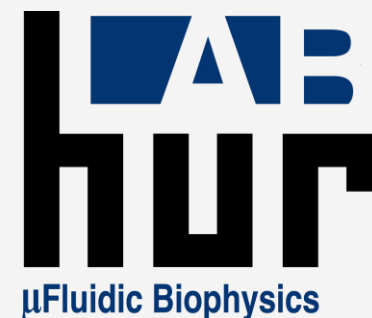
SJ Claire Hur

Clare Boothe Luce Assistant Professor
Department of Mechanical Engineering
Whiting School of Engineering

Department of Oncology
Sidney Kimmel Comprehensive Cancer Center
Johns Hopkins University



@fromHurLab





SJ Claire Hur gets benefit financially from royalty payments from the Vortex Biosciences, Inc.

Acknowledgements



Kahlen Ouyang, PhD



Chris Hyunseok Choi



Hoyoung Yun, PhD



Dwayne Vickers, PhD

THE ROWLAND INSTITUTE at HARVARD
Rowland Junior Fellows Program



- JHMI

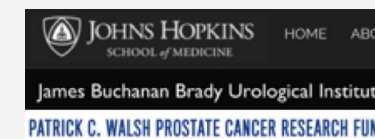
- Christopher Wolfgang, M.D., Ph.D., Lei Zhang M.D., Ph.D., Jun Yu, M.D., Geraldine Seydoux, Ph.D., Steve An, Ph.D., Rebecca Schulman, Ph.D., Luo Gu, Ph.D., Sangwon Kim, Ph.D., Vered Stearns, M.D.

- Rowland Institute at Harvard

- Mike Burns, Ph.D., Winfield Hill, Chris Stokes, Diane Schaak, Ph.D., Prof. Howard Berg, Linda Turner, Don Rogers, Kenny Spencer, Scott Bevis, Jim Foley, Ph.D., Joel Parks, Ph.D.

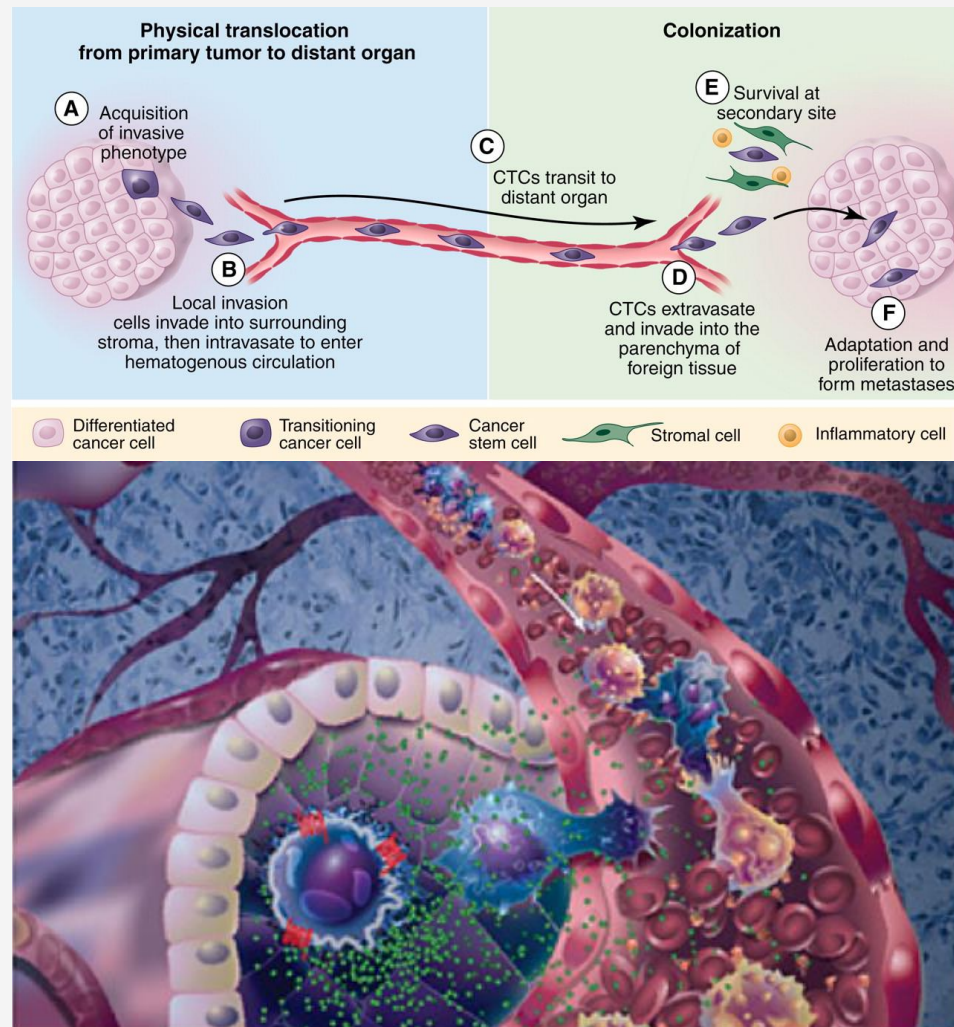
- UCLA

- Prof. Dino Di Carlo, Henry Tse, PhD., Marc Lim, Albert Mach, Ph.D., Prof. James Dunn, Tatiana Zupeman M.D., Chris Walthers, Nicole MacLennan, Karen Chen M.D., Jamie Powers M.D., Prof. Thomas Hahn, Jong Se Park, Ph.D., Prof. Sunghoon Kwon (SNU), Prof. Wook Park (KHU), Prof. Edward McCabe M.D. (UCD)



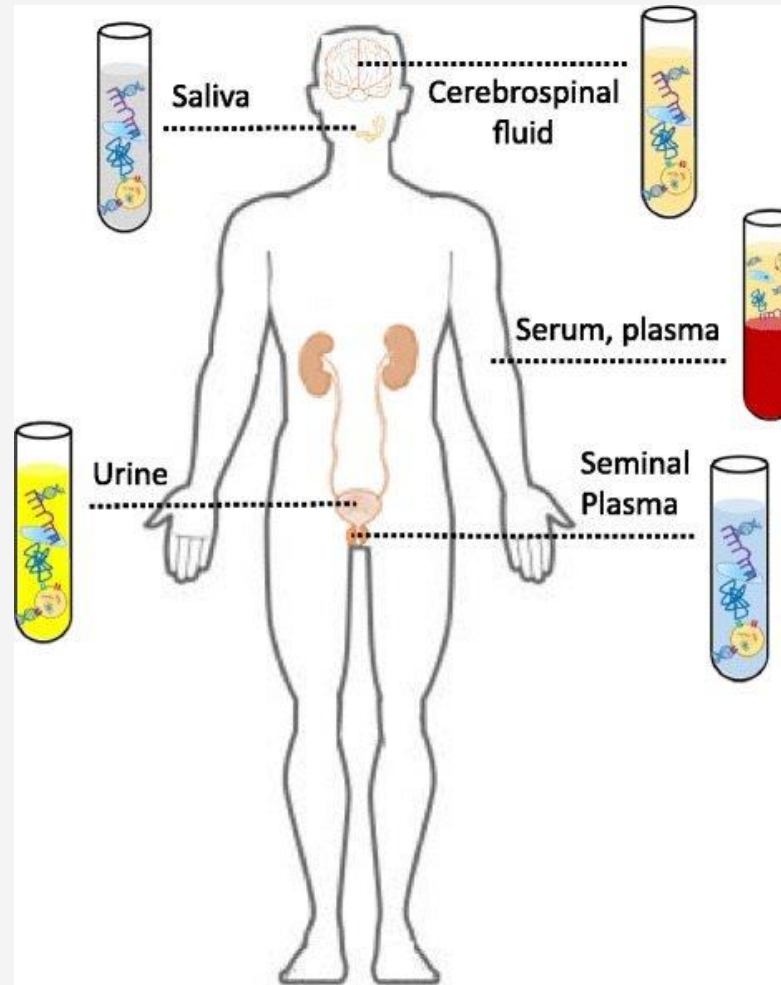
Personalized Cancer Theranostics

Circulating Tumor Cells



<http://kuhn.scripps.edu/default.aspx>

Liquid Biopsy



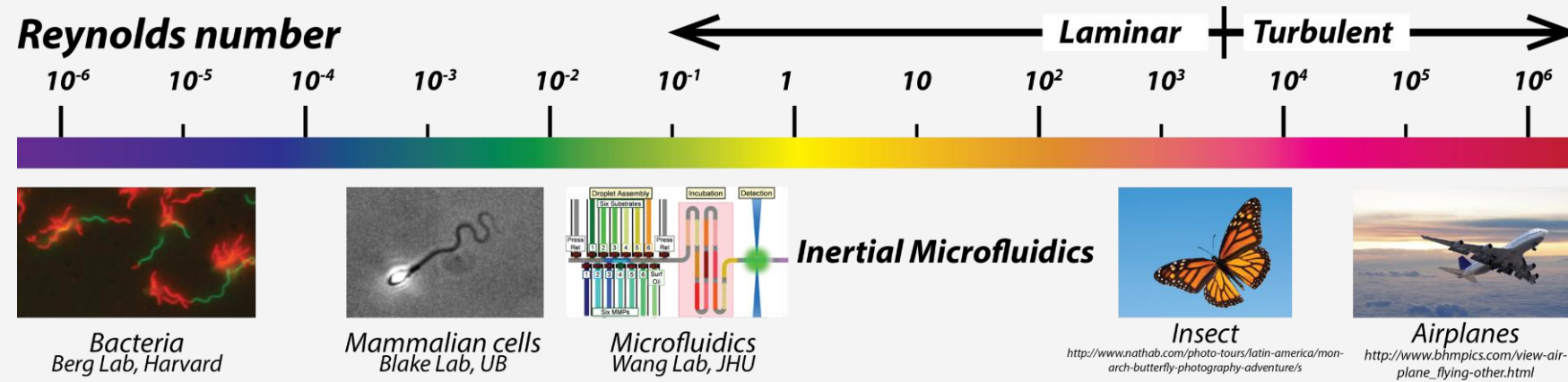
<https://goo.gl/TLzB6J>

Cytotoxic T-cells



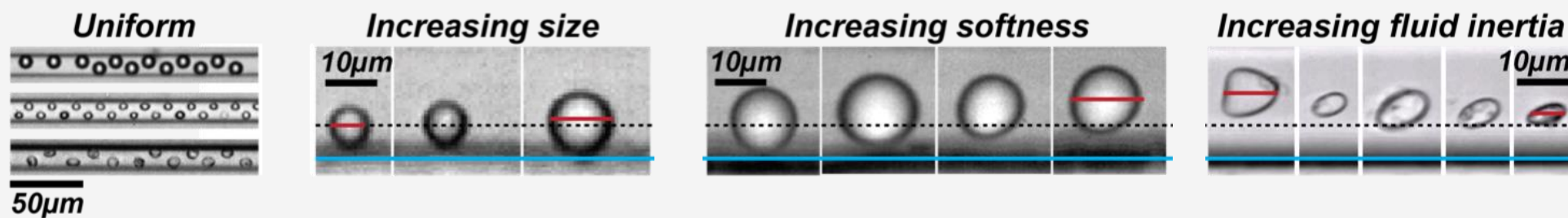
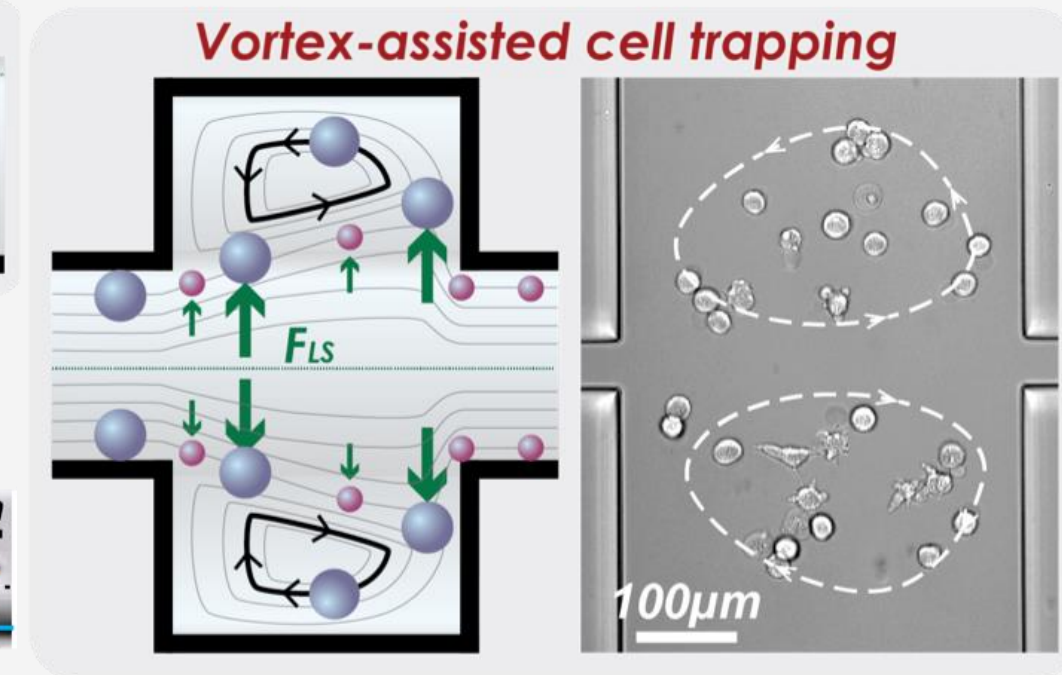
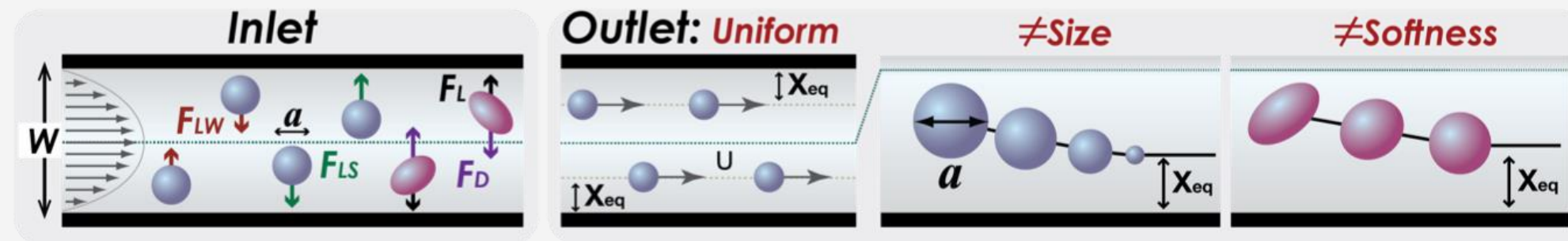
<https://goo.gl/8KMynq>

Inertial Microfluidics

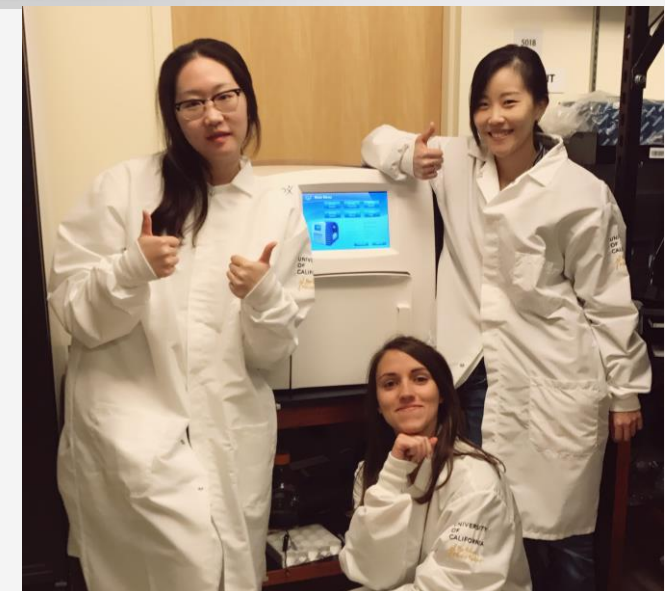
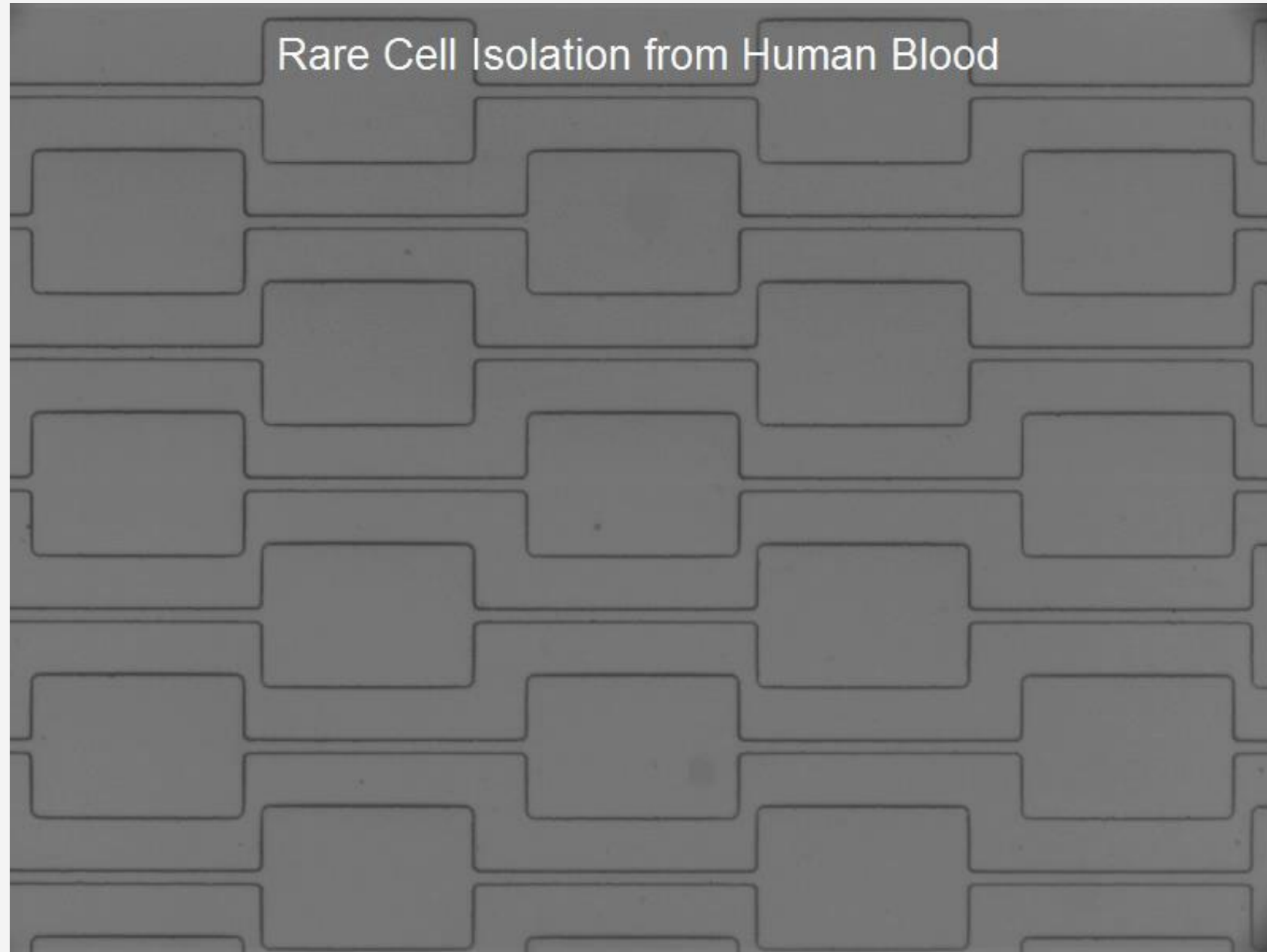


Inertial...

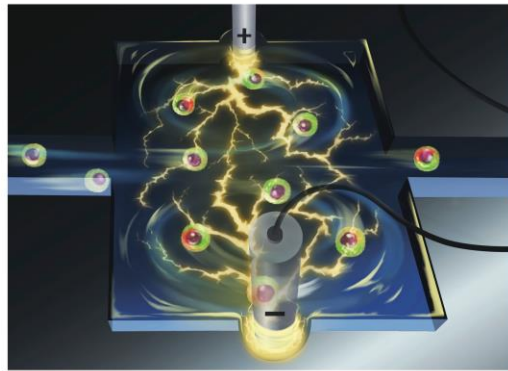
$$R_c = \frac{\text{Inertial}}{\text{Viscous}} = \frac{\rho U_m W}{\mu}$$



Massively Parallel CTC Filtration



Electroporation for Intracellular Multi-Molecular Delivery



Featuring work from the Microfluidic Biophysics Laboratory of Rowland Junior Fellow Soojung Claire Hur, Rowland Institute at Harvard University, USA.

Title: Sequential multi-molecule delivery using vortex-assisted electroporation

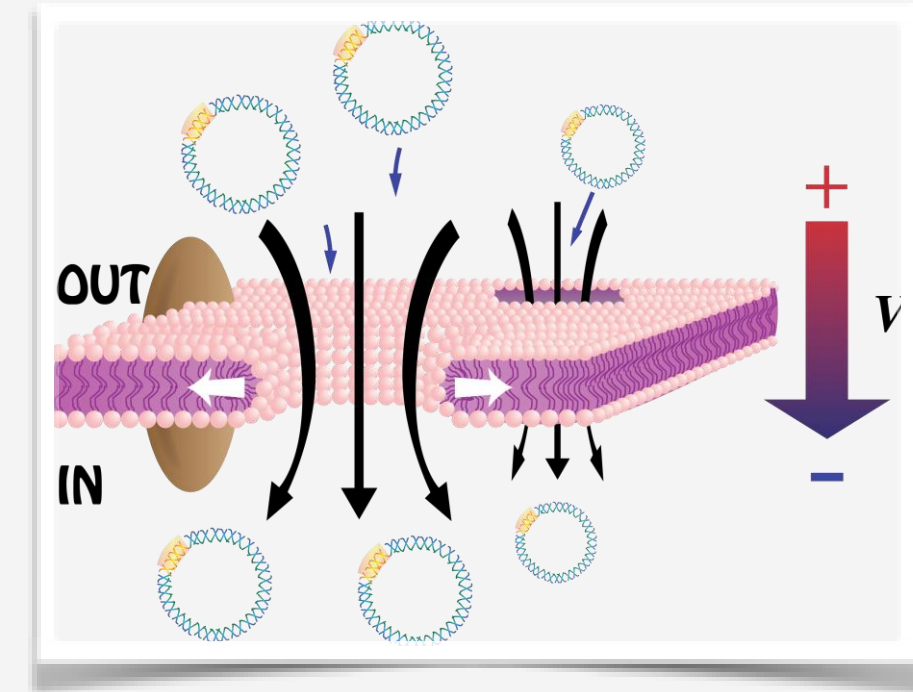
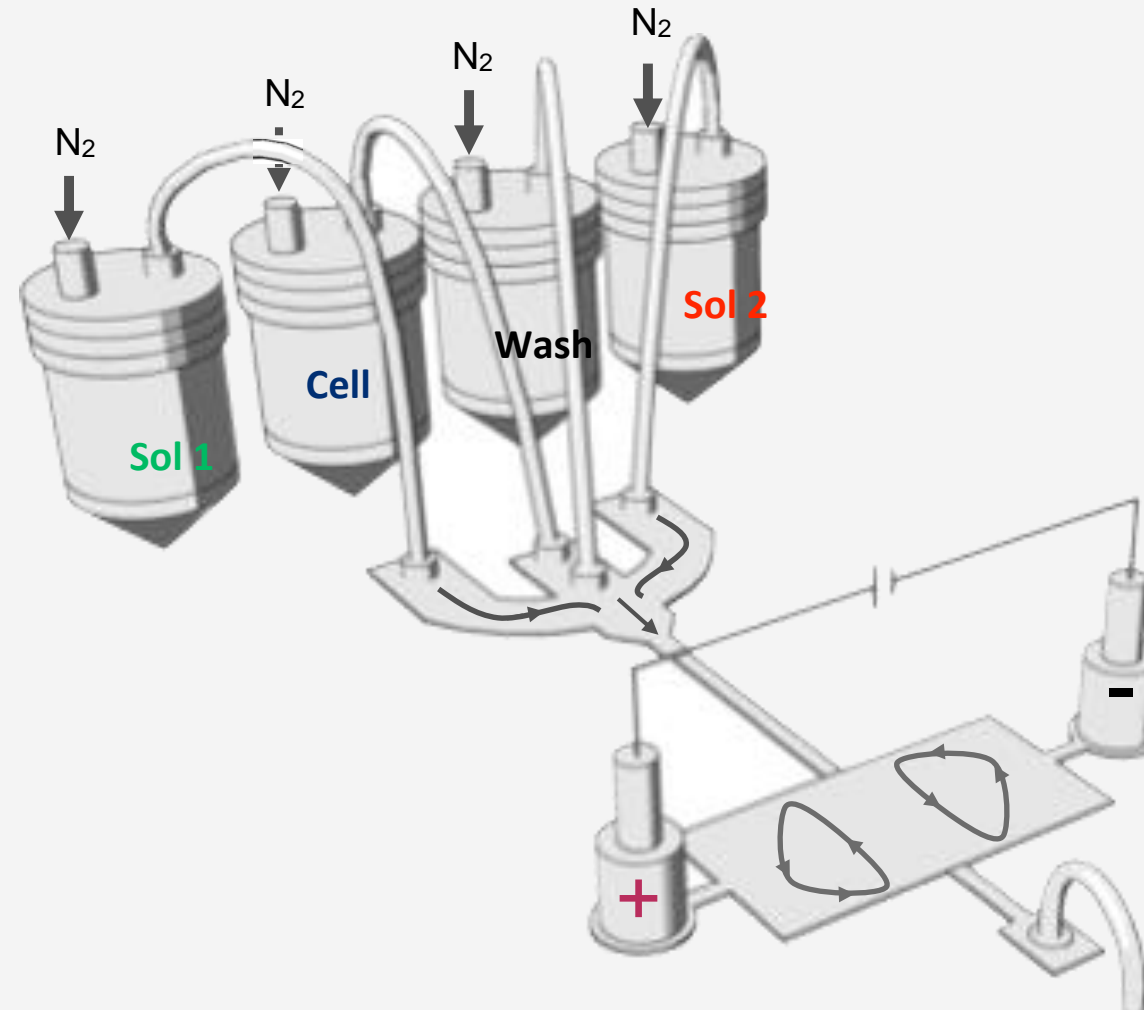
A vortex-assisted microfluidic electroporation system is developed for sequential delivery of multiple molecules into pre-selected target cell populations with precise and independent dosage controllability and improved sample viability.



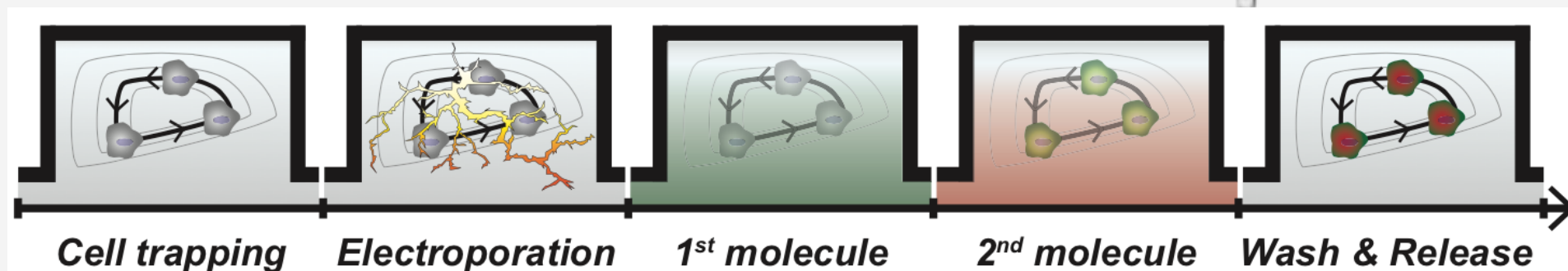
See Hoyoung Yun and Soojung Claire Hur, Lab Chip, 2013, 13, 2164.

RSC Publishing

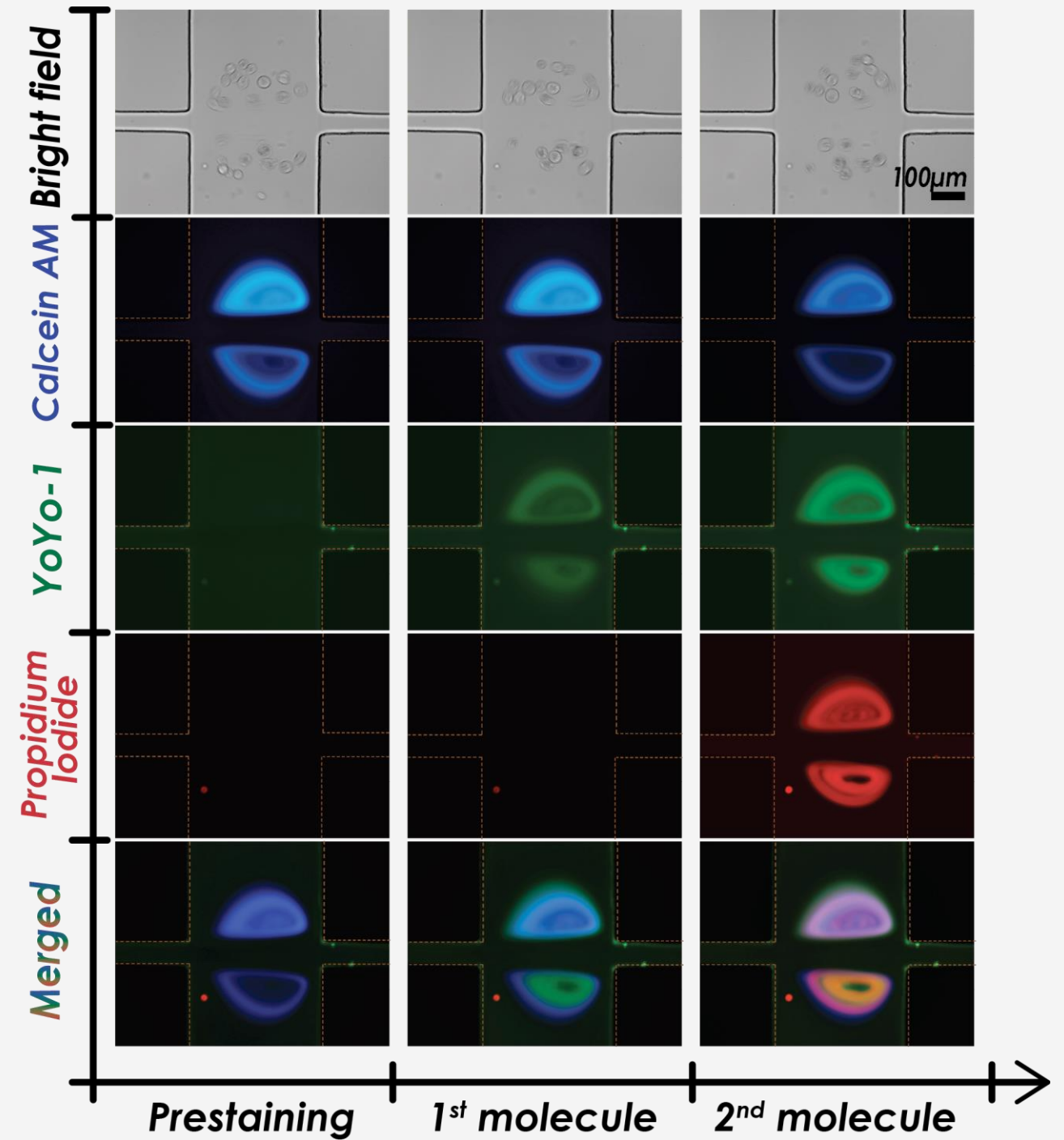
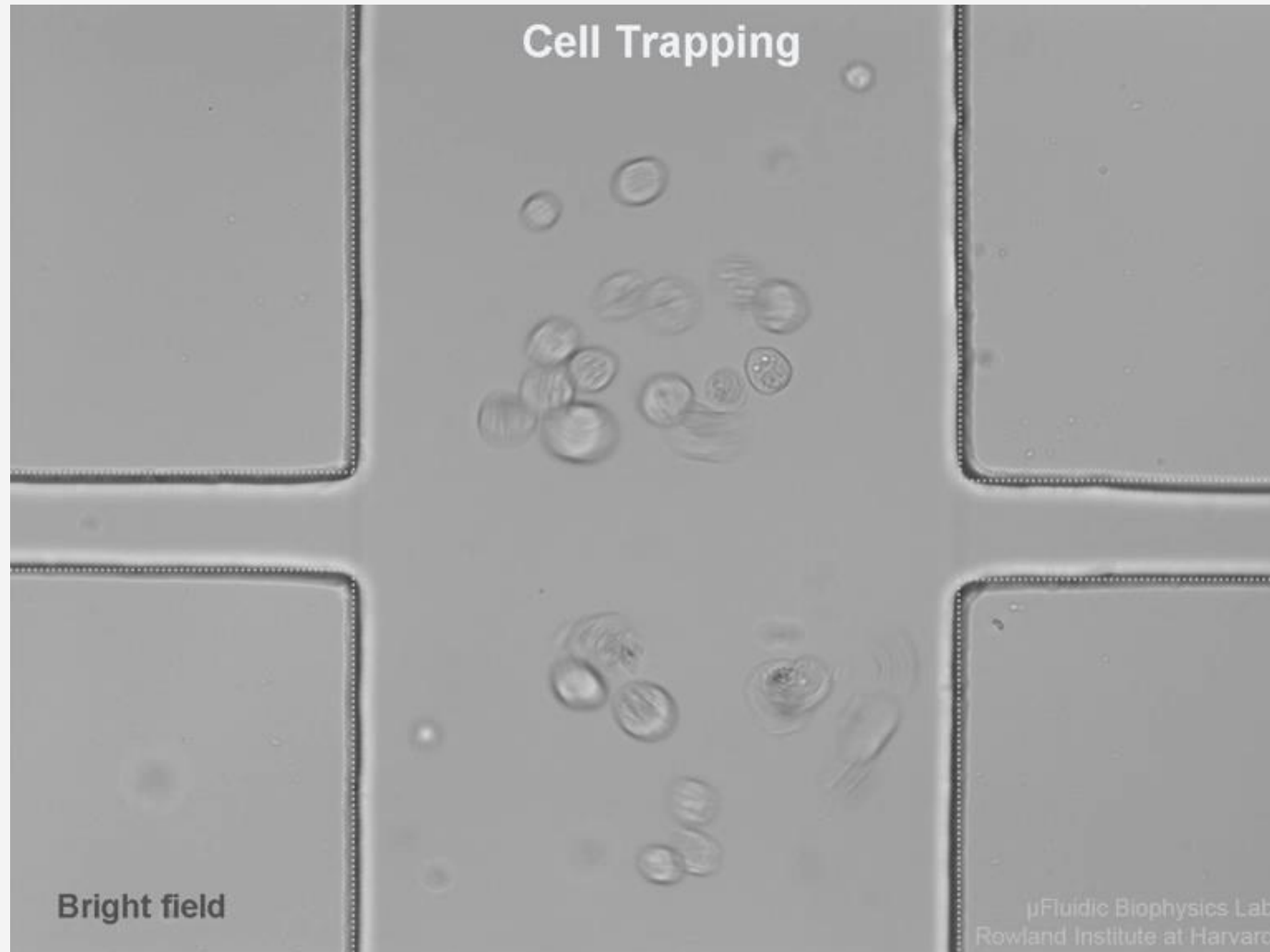
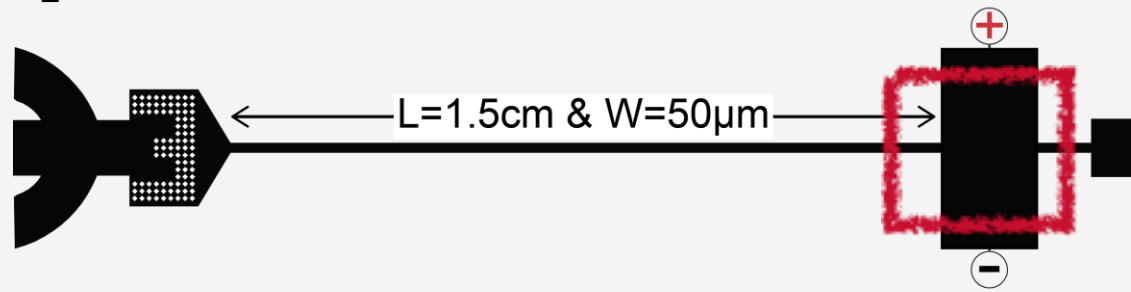
www.rsc.org/loc

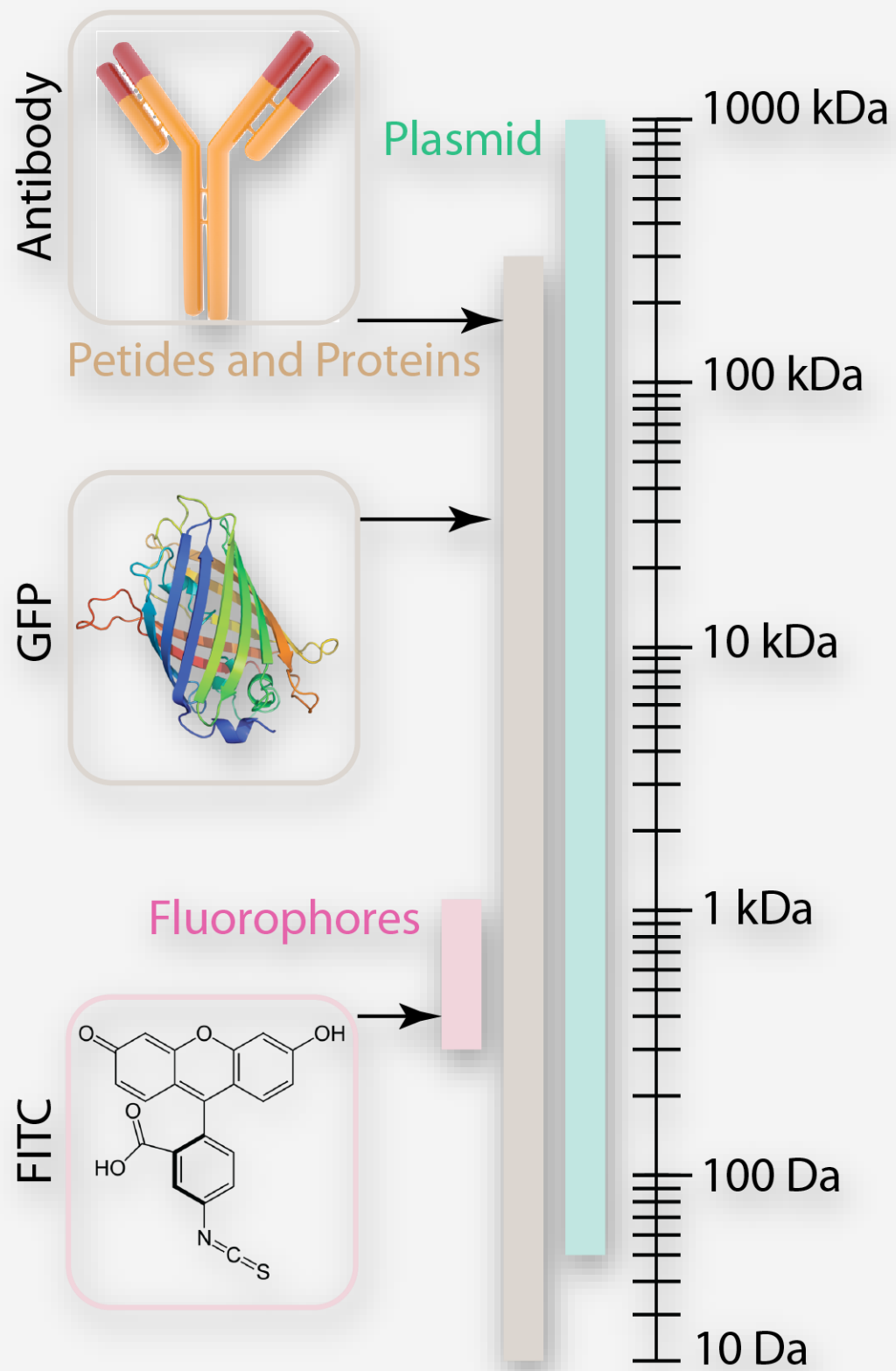


H. Yun and S.C. Hur, Lab on a Chip (2013)

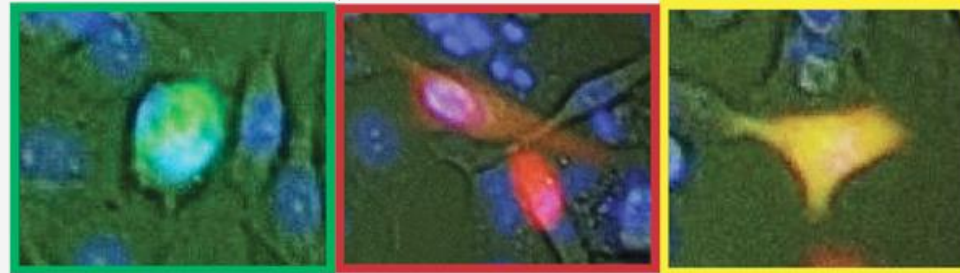


Sequential Multi-Molecular Delivery

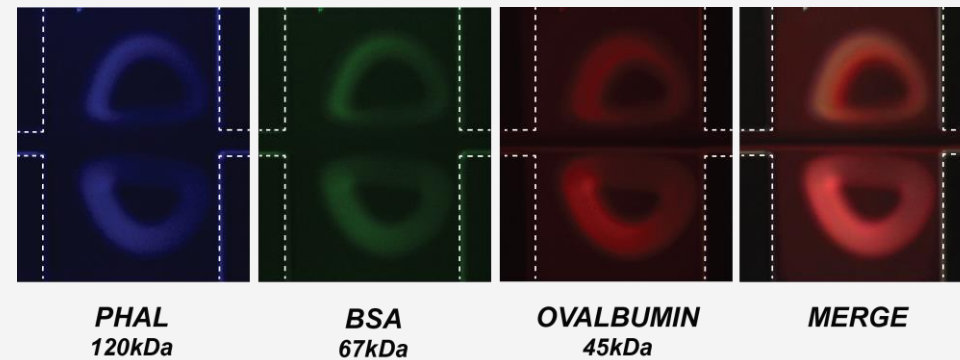




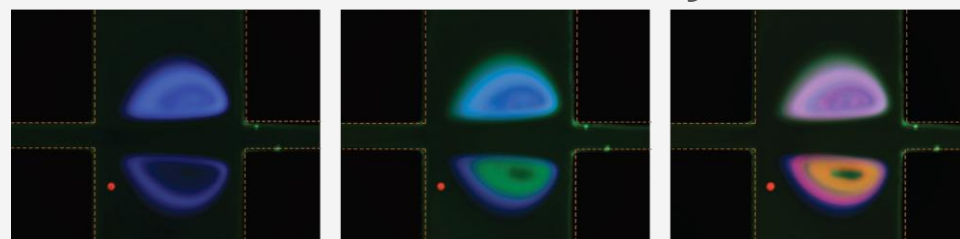
Plasmids, siRNAs and miRNAs



Intact Proteins

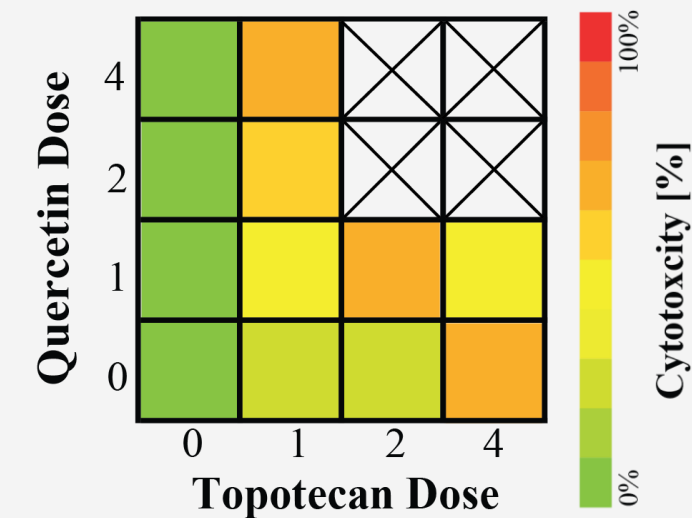


DNA fluorescent dyes

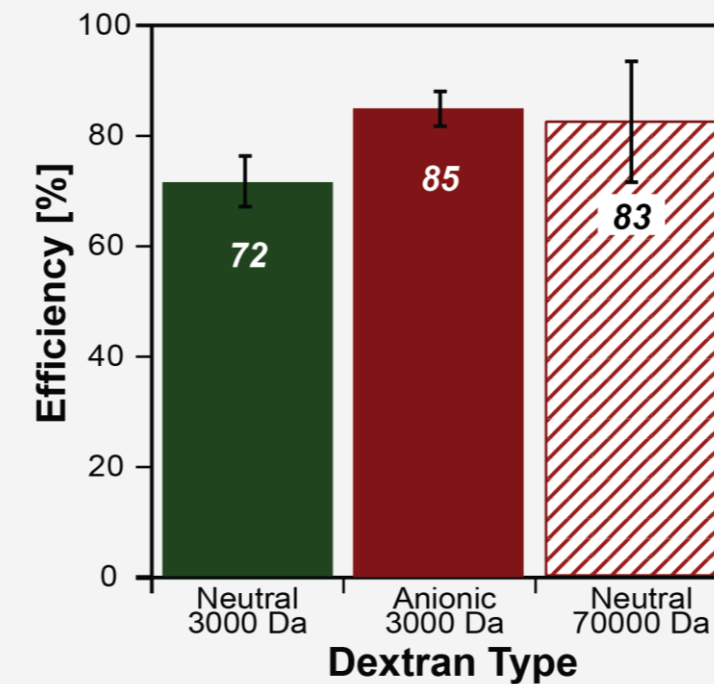


Yun and Hur, Lab on a Chip 2013
 Vickers and Hur, JoVE 2014
 Vickers, Ouyang, Choi and Hur, Anal. Chem 2014
 Ouyang *et al.*, Nat Sci. Rep 2017

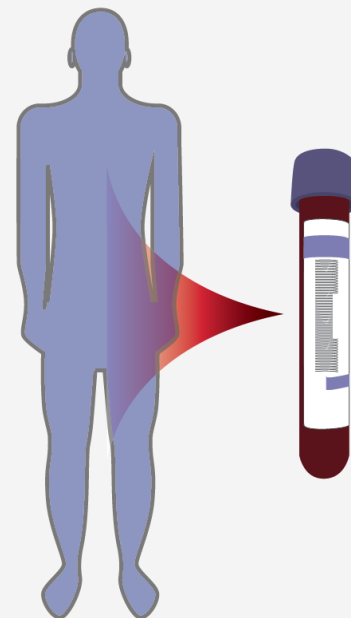
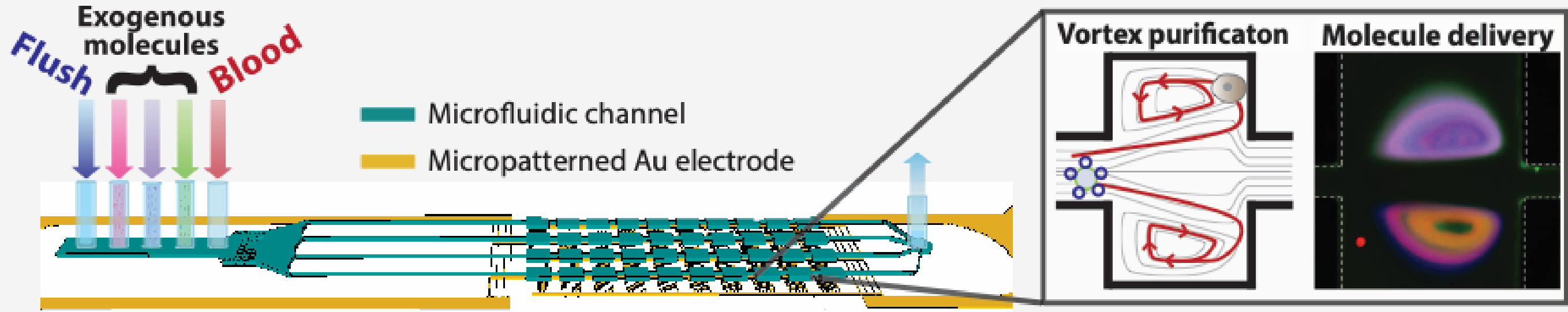
Drug Cocktail Evaluation



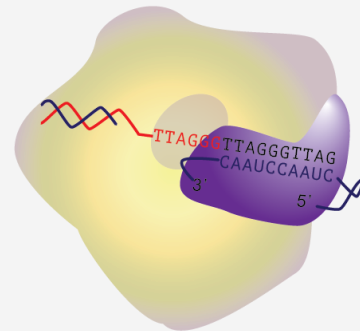
Macromolecules



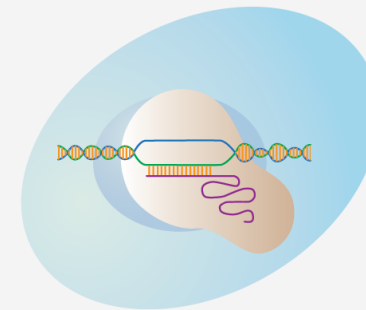
Vortex-integrated BioEditor



Gene “pasting”
CTC Cell lines
Genetic Barcoding



Gene “cutting”
Therapeutic T-cell



Thank you.

For more information, visit www.IMBiotech.com